



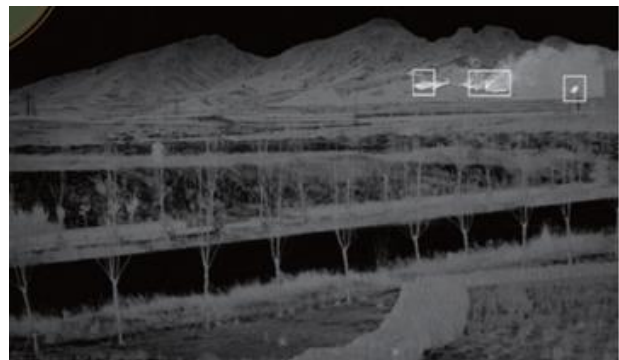
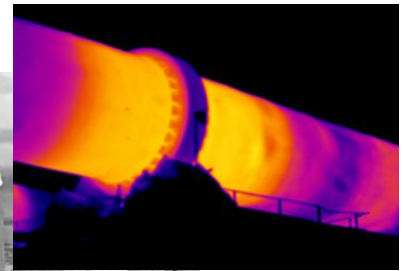
Dual-Sensor Thermal Camera WLS-DTE FAR Series

Features:

- Up to 9km detection distance
- Thermal resolution up to 1280×1024
- VOx detectors based on MEMS technology
- IP Camera
- IP66 protection
- DC24V power (AC90V ~ 260V optional)
- Working temp: -35 ~ +55°C
- SDE image detail enhancement technology
- Intelligent function: Auto-tracking, Fire alarm, temp monitor etc.

Applications:

Suitable for monitoring of water system, stock house, transportation, city security, crime, etc.



Specific cartons subject to change without notice. Errors and misprints excepted. Pictures in this document may differ from these actual product. © 2020 Walson Electronic Technologies Inc.

WLS-DTE Specification					
Category	Title	DTE3150Z	DTE3180Z	DTE3230Z	DTE3300Z
Detection	Vehicle	13km	16km	17km	18km
	Human	5km	6km	7km	8km
	Fire	6km	7km	8km	10km
Thermal	Lens	25~150mm	30~180mm	22~230mm	30~300mm
	Resolution	640*512 (1280*1024 optional)			
	NETD	50mk (20mk optional)			
	Sensor	VOx sensor/7.5 ~ 14μm			
Visible	Surface	1/2.8" Star Level CMOS, Integrated ICR Dual Filter D/N Switch			
	Resolution	2 mega pixels, 1920 x 1080			
	illumination	0.05Lux high sensitive color, 0.052Lux black and white			
	Encoding	H.265/H.264/MPEG4/MIPEG			
	Bit Rate	32Kbps-16Mbps, 60Hz 30 frames/second			
	Lens	8~500mm	8~500mm	8~500mm	25~750mm
	Aperture	Support			
	Others	2X, 4X digital amplification; NUC Correction; 6. Hot-point analysis			
Housing	Material	Integral aluminum alloy housing			
	Protection Level	IP66			
	Others	Wipers, Window Clearing, Lens Servo, other module optional			
Interface	Network	RJ45. 10/100 Base-T adaptive (integrated video output and RS485 control)			
	Protocol	TCP/IP, UDP, IPv4/v6; support HTTP, RTP, RTSP, NFS, DHCP, NTP, SMTP, SNMPv1/v2c/v3, UPNP			
	Power	AC/DC24V			
Environment Parameter	Working Temp	- 25°C ~+60°C (- 40° C Optional)			
	Storage Temp	-45°C ~+70°C			
	Humidity	<90%			
	Others	Seismic resistance: 0.2g; Impact resistance: 15g			
Pan/Tilt	Angle	Pan: 0 - 360° ;Tilt: -45° ~ +45°(-70°/+70° Optional)			
	Speed	Pan: 0.01 ~ 60°/S, Tilt: 0.01 ~ 30°/S			
	Others	Accuracy: ±0.1°; lens focus speed adaptive function			
Others	Weight	≤60kg (PT included)			
	Power Consumption	120W			
Function	Basic	Cruise Line-Scan/ Pre-positioning/Automatic Cruise Route /Automatic Scanning Route/ Power-off memory/Azimuth Information/ Zero correction/			
	Optional	24hr cruise/Temp Compensation/Remote Maintenance			
	Intelligence (optional)	Area intrusion detection/Border-Crossing intrusion detection /Panoramic stitch/Radar link/Auto-tracking/Multi-scene group cruiseion/3D zooming/positioning selection;			



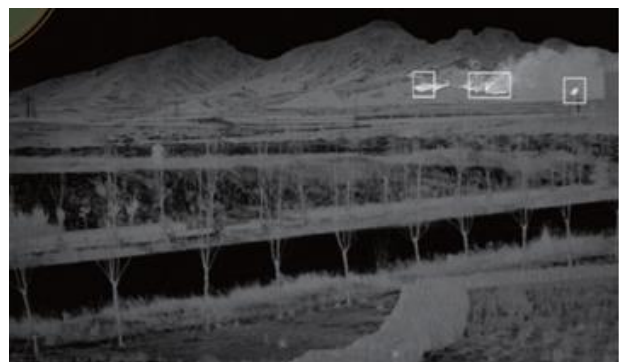
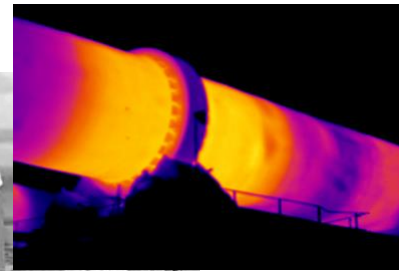
Dual-Sensor Thermal Camera WLS-DTE ZOOM Series

Features:

- Up to 9km detection distance
- Thermal resolution up to 1280×1024
- VOx detectors based on MEMS technology
- IP Camera
- IP66 protection
- DC24V power (AC90V ~ 260V optional)
- Working temp: -35 ~ +55°C
- SDE image detail enhancement technology
- Intelligent function: Auto-tracking, Fire alarm, temp monitor etc.

Applications:

Suitable for monitoring of water system, stock house, transportation, city security, crime, etc.



Specific cartons subject to change without notice. Errors and misprints excepted. Pictures in this document may differ from these actual product. © 2020 Walson Electronic Technologies Inc.

WLS-DTE Specification				
Category	Title	DTE3075Z	DTE3105Z	DTE3155Z
Detection	Vehicle	6300m	8600m	13000m
	Human	2500m	3400m	4800m
	Fire	3000m	4000m	6000m
Thermal	Lens	25~75mm	22.5~105mm	31~155mm
	Resolution	384*288 (640*512 optional)		
	NETD	50mk (20mk optional)		
	Sensor	VOx sensor/7.5 ~ 14μm		
Visible	Surface	1/2.8" Star Level CMOS, Integrated ICR Dual Filter D/N Switch		
	Resolution	2 mega pixels, 1920 x 1080		
	illumination	0.05Lux high sensitive color, 0.052Lux black and white		
	Encoding	H.265/H.264/MPEG4/MIPEG		
	Bit Rate	32Kbps-16Mbps, 60Hz 30 frames/second		
	Lens	8 ~ 320mm	8~500mm	15~528mm (750mm Optional)
	Aperture	Support		
	Others	2X, 4X digital amplification; NUC Correction; 6. Hot-point analysis		
Housing	Material	Integral aluminum alloy housing		
	Protection Level	IP66		
	Others	Wipers, Window Clearing, Lens Servo, other module optional		
Interface	Network	RJ45. 10/100 Base-T adaptive (integrated video output and RS485 control)		
	Protocol	TCP/IP, UDP, IPv4/v6; support HTTP, RTP, RTSP, NFS, DHCP, NTP, SMTP, SNMPv1/v2c/v3, UPNP		
	Power	AC/DC24V		
Environment Parameter	Working Temp	- 25°C ~+60°C (- 40° C Optional)		
	Storage Temp	-45°C ~+70°C		
	Humidity	<90%		
	Others	Seismic resistance: 0.2g; Impact resistance: 15g		
Pan/Tilt	Angle	Pan: 0 - 360° ;Tilt: -90° ~ +90°(-70°/+70° Optional)		
	Speed	Pan: 0.01 ~ 60°/S, Tilt: 0.01 ~ 30°/S		
	Others	Accuracy: ±0.1°; lens focus speed adaptive function		
Others	Weight	≤40kg (PT included)		
	Power Consumption	120W		
Function	Basic	Cruise Line-Scan/ Pre-positioning/Automatic Cruise Route /Automatic Scanning Route/ Power-off memory/Azimuth Information/ Zero correction/		
	Optional	24hr cruise/Temp Compensation/Remote Maintenance		
	Intelligence (optional)	Area intrusion detection/Border-Crossing intrusion detection /Panoramic stitch/Radar link/Auto-tracking/Multi-scene group cruiseion/3D zooming/positioning selection;		