



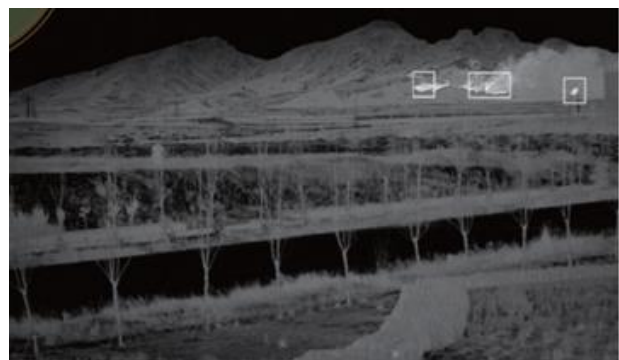
T-Shape Thermal Camera WLS-CTE Series

Features:

- Up to 7km detection distance
- Thermal resolution up to 1280×1024
- VOx detectors based on MEMS technology
- IP Camera
- IP66 protection
- DC24V power (AC90V ~ 260V optional)
- Working temp: -35 ~ +55°C
- SDE image detail enhancement technology
- Intelligent function: Auto-tracking, Fire alarm, temp monitor etc.

Applications:

Suitable for monitoring of water system, stock house, transportation, city security, crime, etc.



Specific cartons subject to change without notice. Errors and misprints excepted. Pictures in this document may differ from these actual product. © 2020 Walson Electronic Technologies Inc.

WLS-CTE Specification				
Category	Title	WST-CTE4020F	WST-CTE4050F	WST-CTE4075Z
Detection	Vehicle	1700m	4200m	6300m
	Human	420m	1700m	2500m
	Fire	1000m	2000m	3000
Thermal	Lens	20mm F1.0	50mm F1.0	25~75mm
	Resolution	384*288 (640*512 optional)		
	NETD	50mk (20mk optional)		
	Sensor	VOx sensor/7.5 ~ 14μm		
Visible	Surface	1/2.8" Star Level CMOS, Integrated ICR Dual Filter D/N Switch		
	Resolution	2 mega pixels, 1920 x 1080		
	illumination	0.05Lux high sensitive color, 0.052Lux black and white		
	Encoding	H.265/H.264/MPEG4/MIPEG		
	Bit Rate	32Kbps-16Mbps, 60Hz 30 frames/second		
	Lens	4.7~141mm (6~210mm Option)	4.7~141mm (6~210mm Option)	8~320mm
	Aperture	Support		
	Others	2X, 4X digital amplification; NUC Correction; 6. Hot-point analysis		
Housing	Material	Integral aluminum alloy housing		
	Protection Level	IP66		
	Others	Wipers, Window Clearing, Lens Servo, other module optional		
Interface	Network	RJ45. 10/100 Base-T adaptive (integrated video output and RS485 control)		
	Protocol	TCP/IP, UDP, IPv4/v6; support HTTP, RTP, RTSP, NFS, DHCP, NTP, SMTP, SNMPv1/v2c/v3, UPNP		
	Power	AC/DC24V		
Environment Parameter	Working Temp	- 25°C ~+60°C (- 40° C Optional)		
	Storage Temp	-45°C ~+70°C		
	Humidity	<90%		
	Others	Seismic resistance: 0.2g; Impact resistance: 15g		
Pan/Tilt	Angle	Pan: 0 - 360° ;Tilt: -90° ~ +90°		
	Speed	Pan: 0.01 ~ 100°/S, Tilt: 0.01 ~ 60°/S		
	Others	Accuracy: ±0.1°; lens focus speed adaptive function		
Others	Weight	≤25kg (PT included)		
	Power Consumption	120W		
Function	Basic	Cruise Line-Scan/ Pre-positioning/Automatic Cruise Route /Automatic Scanning Route/ Power-off memory/Azimuth Information/ Zero correction/		
	Optional	24hr cruise/Temp Compensation/Remote Maintenance		
	Intelligence (optional)	Area intrusion detection/Border-Crossing intrusion detection /Panoramic stitch/Radar link/Auto-tracking/Multi-scene group cruiseion/3D zooming/positioning selection;		